

3. Civic Space Study

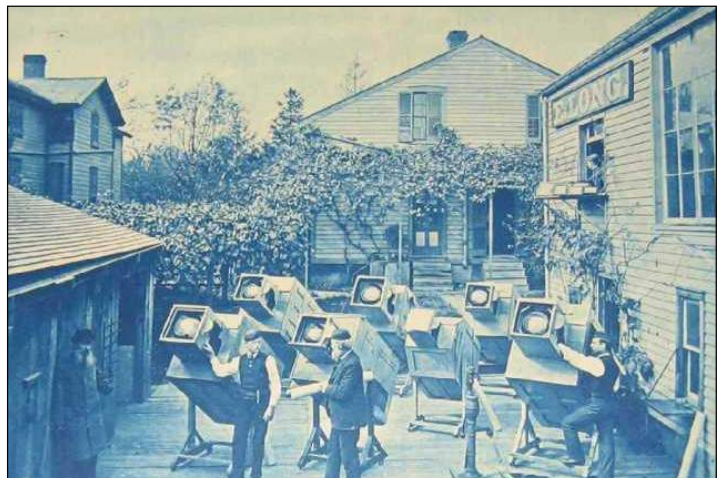
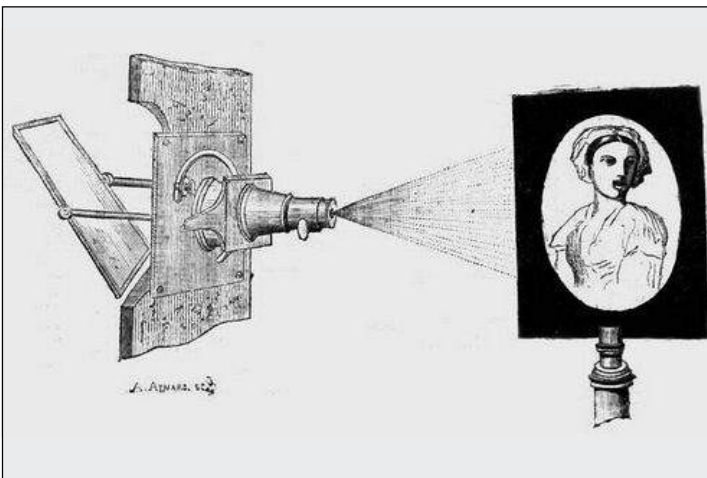
Civic Space Study

History

History of Place *Infrastructure + Development*



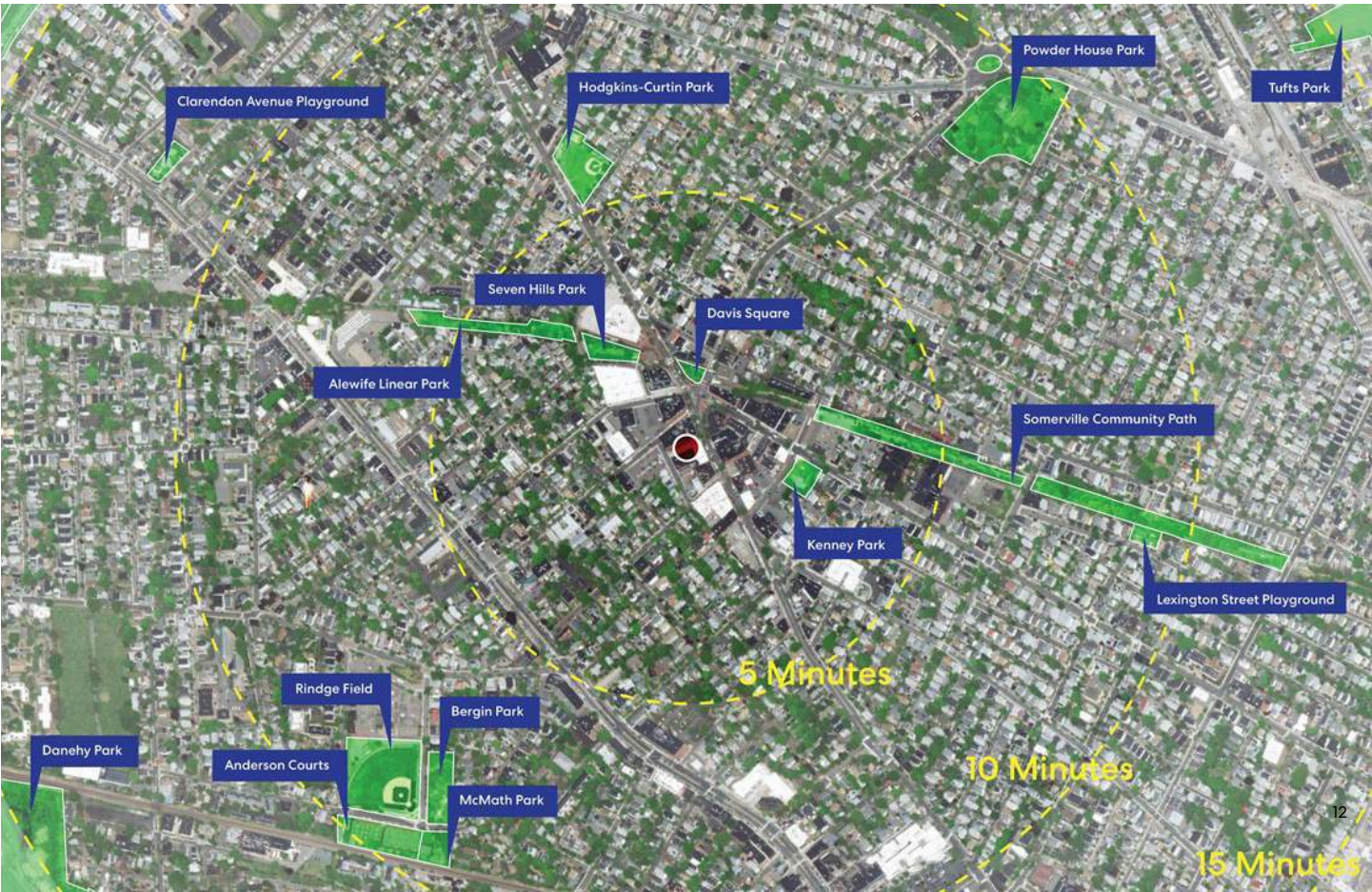
History of Place *Artisan Beginnings*



Sprague and Hathaway - Solar Enlarging, Framing, Artist Studio

Nearby Open Spaces

Local Precedents



Davis Square

Davis square is an intersection in Somerville, MA. After the growth the extension of the MBTA Red Line brought in the mid-1980s, it has become a commercial, retail, and dining district.

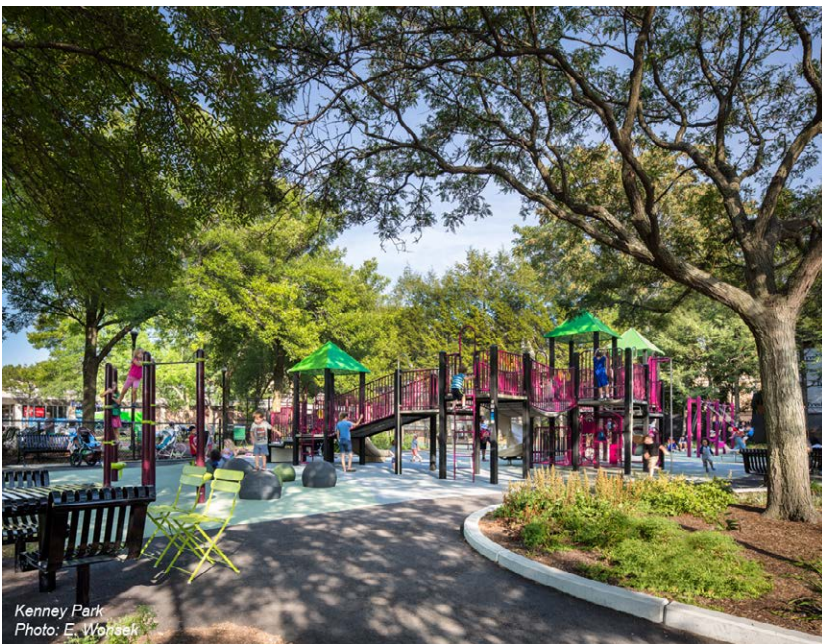
Size: 66.56-Acres



Kenney Park

Kenney Park is a publicly owned corner park in Somerville, MA. It features a plaza with a fountain, a basketball court, fitness equipment for all ages, movable benches, and picnic tables.

Size: 0.43-Acres



Seven Hills Park

Seven Hills Park is a park in Somerville, MA. It features seven towers, one for each of Somerville's seven hills and a brick path leading to Alewife Linear Park and the Community Bike Path.

Size: 0.69-Acres



Alewife Linear Park

Alewife Linear Park is a park in Cambridge, MA. There is an ongoing redesign and reconstruction proposal for the park between Russell Field and the Cambridge-Somerville city line.

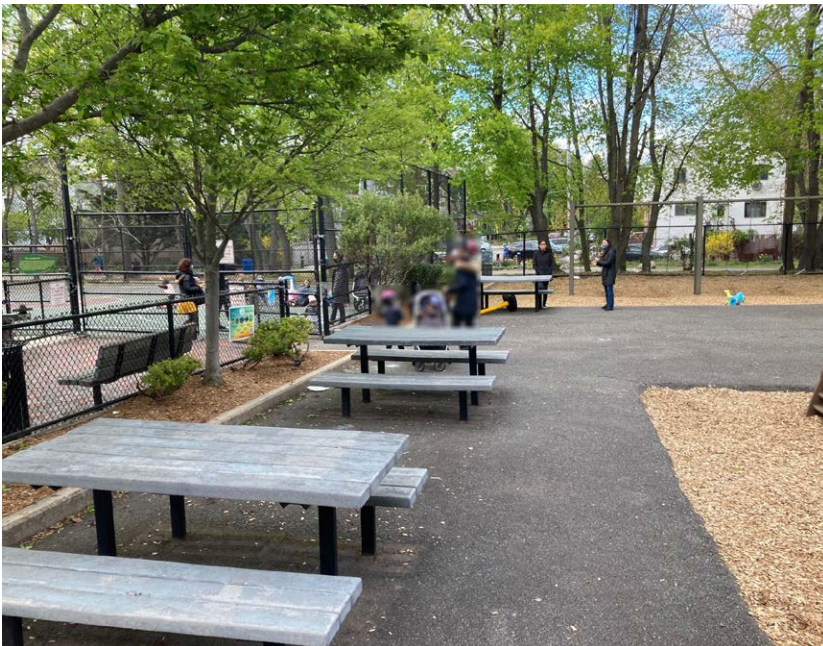
Size: 1.50-Acres



Lexington Street Playground

Lexington Street Playground is a playground in Lexington Park in Somerville, MA. The park includes playground equipment, a picnic table area and a basketball court.

Size: 0.16-Acres



Somerville Community Park

The Somerville Community Path is rail trail in Somerville, MA. It follows a part of the former Fitchburg Cutoff rail line. The Green Line Extension proposed a 1.9-mile to East Cambridge.

Size: 1.5-Acres



Hodgkins-Curtin Park

Hodgkins-Curtin Park is a renovated park in Somerville, MA. It features a Tot Lot, a Lot for 5-12 year-old children, play and stone structures on rubber and sand, trees and plantings.

Size: 1.5-Acres



Powder House Park

The Powder House Park is a piece of land around the Powder House in Somerville MA. It is at the 6-way intersection of College Ave, Broadway and Warner St., and Powder House Boulevard.

Size: 2.94-Acres



Ringe Field

Rindge Field is a baseball field located in Cambridge, MA. It features a mural along its edge and is nearby Bergin Park, Pemberton Tennis Courts, basketball courts, and a fenced-in dog park.

Size: 4.28-Acres



Bergin Park

Bergin Park is a park located in Cambridge, MA. It features a playground with a water element. It is nearby Bergin Park, Pemberton Tennis Courts, basketball courts, and a fenced-in dog park.

Size: 1.13-Acres



Bow Market

Bow Market is a community space in Somerville, MA. A hub for small business and local entertainment it includes retail, art shops, commercial, and dining around a central courtyard.

Size: 0.06-Acres



Demographic



Demographic

